



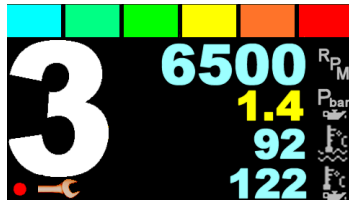
TB400 *color* dashboard

Data display on colour TFT screen with very good contrast even in sunny conditions.

The data to be displayed are spread over several pages so the pilot can concentrate on the essentials.

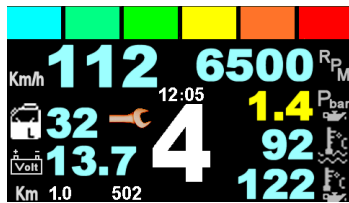
Stage page:

- selected gear
- engine rpm
- oil pressure
- water temperature
- oil temperature



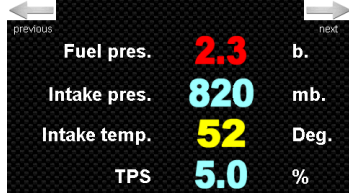
Liaison page:

- selected gear
- vehicle speed
- fuel gauge
- battery voltage
- clock
- Km partial and total
- main engine parameters



Diagnostic pages:

- 4 or 8 parameters per page
- depending on the ECU, as many pages as necessary
- colours according to alert thresholds



Shift light and alerts:

- transparent popups on each page
- a high brightness multicoloured led
- remote indicators (optional outputs)
- background colour change



Data logger:

Engine data are memorised in internal memory (10 MB maxi, many driving hours) then downloaded to a **USB flash drive** at first stop.

A remote button placed on the steering wheel or on the console allows page changes. The inputs are compatible with Peugeot/Citroën, Renault, VDO, active 0/5V sensors. For other sensors, contact us.

More information and videos on **CRISARTECH** website

Product subject to continuous improvements, in particular page design

CRISARTECH SARL
161 chemin du Roc
FR – 82300 MONTEILS

Tél.: +33.(0)5.63.93.25.24
E-mail: info@crisartech.com
Web: http://www.crisartech.com



A TB400 **CRISARTECH** dash gives you:

- product designed and built in Germany, with highest quality standards
- firmware developed in France by us, in close collaboration with pilots, optimised to be connected to **CAN bus Engine Control Management**
- very high level of service before / after sales
- attractive performance / price ratio
- **very good readability** whatever the ambient light
- **USB socket** for firmware update, configuration file upload, data logger
- intuitive ergonomics: **touch screen**, pictograms use, configuration menus in 3 languages (F, GB, SP)
- configuration settings in **non-volatile memory**, with no battery
- **customisation by user**: displays, diagnostic pages...

Technical data:

- alimentation 9 to 36 Volts, 0.2 to 0.4 A.
- TFT screen, 4"3, 480 x 272 pixels, 95 x 53 mm
- optional resistive touch screen usable with gloves
- 2 CAN bus 2.0B active
- 1 multicoloured led for shift light, alerts
- 4 optional inputs for sensors, buttons...
- 3 optional outputs for indicators, controls...
- clock for data logger time stamping
- waterproof IP66 case, 142 x 98 x 43 mm, 300 g.

